

TRIMBLE VISIBILITY IN KUEBIX TMS

Predictive Analytics and Visibility to Shipments in Real-Time

Trimble Visibility inside of Kuebix TMS is helping shippers gain true visibility to their supply chains. With Visibility, any shipper can track and trace orders in real-time by modularly adding Trimble Visibility as a Premier Application. This means there's no need for external or disjointed systems, improving usability and accelerating customer service.

This Premier Application offers companies real-time insights and aggregated supply chain data for the answers they need on their FTL, LTL, and parcel loads. With Trimble Visibility, shippers can leverage GPS technology in use by their carriers to track shipments and leverage predictive analytics to proactively manage exceptions.

HOW DOES TRIMBLE VISIBILITY IN KUEBIX WORK?

Trimble Visibility aggregates tracking information from EDI and API connections, mobile apps, ERP or WMS integrations, FTP channel and telematics from carriers. It then applies advanced algorithms and predictive analytics to present users with information like loads which are in jeopardy of being late.

When accessing Trimble Visibility through Kuebix, a user can simply click on the tracking icon on a shipment to see 'quick view' information. Drilling down further, users are taken to a Trimble Visibility screen with an interactive map and information on departure times, in-transit statuses, delays, and warnings based on traffic, weather, and other predictive analytics.

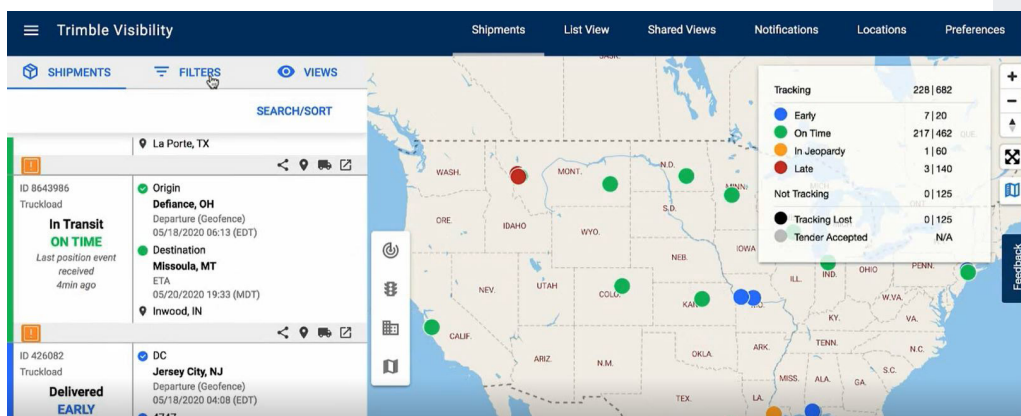
This view is fully customizable and filterable based on pre-defined parameters such as location, product brand, customer, SKU, or business unit, etc.

KEY FEATURES

- Real-time status updates
- Automatic text and email alerts for milestones
- Predictive analytics to determine loads in jeopardy
- Geo-fencing and GPS tracking
- Live mapping

KEY BENEFITS

- Quickly view the status of shipments
- Act on loads in jeopardy before they become late
- Pass-along tracking information to customers and partners
- See exceptions in minutes, not days
- Accurate OTD and exception reporting
- **Do it all from one platform!**





MOBILE APP FOR CARRIERS

Carriers that don't already have connections via traditional EDI, API or other integrations can incorporate Trimble Visibility's mobile app, VisibilityDrive, into their operations to provide seamless tracking information to shippers. Drivers simply download the app on their cell phone and deliveries can be tracked via satellite GPS. Drivers can also upload pictures of damages, discrepancies, or signature captures so that customer service departments have the information they need to act quickly when issues arise. Any type of OS&D message can be lumped into the Exception status type. Information is transited automatically back to Kuebix for accurate record-keeping and ease-of-access.

PRO-ACTIVE SHIPMENT ALERTS AND STATUS UPDATES

Instead of combing through shipment statuses looking for trucks which are in jeopardy of missing their delivery windows, users can leverage Trimble Visibility's dynamic alerting capabilities to get notified via email or text message. Alerts can be automatically sent to vendors, suppliers and customers as well, cutting down on communication time and improving visibility. Alerts are easy to set up and customized using a menu of options within the platform so that important shipment milestones never get missed.










In addition to automatic alerts, users can click the "Share" button on a shipment to send a scrubbed, 'shared view' to customers or vendors via text or email.

LOCATION SETTINGS AND GEO-FENCING

Users can define specific locations by drawing on satellite images or specifying radiuses around a target location. For example, a user could set a .2 mile radius around a customer's warehouse to know when the driver has arrived for delivery. This provides users with an independent and accurate version of a truck's location. When a truck passes a pre-defined marker, an alert will trigger marking the delivery as "Arrived" or "Departed" from the location. Shippers can use this information to get specific detention accessorial and OTD reporting.

OPTIONAL CUSTOMIZABLE URL

Companies that want their own fully customizable URL can opt for their own instance of Trimble Visibility. This allows the format of the page and tracking links sent to customers to be branded with the company's colors and positioning. For example, Anheuser-Busch used www.TrackMyBud.com for their customer portal.

Icon	Status
	Info Received
	In Transit
	Out for Delivery
	Failed Attempt
	Delivered
	Available for Pickup
	Exception
	Expired
	Pending

Trip Progress

Completed



100%

933 miles traveled

0 miles remaining