

# COMMUNITY LOAD MATCH

Leveraging advanced matching capabilities and cutting-edge map visualization via Trimble MAPS, Community Load Match makes it easier than ever for shippers to find truckload capacity. Instead of spending countless hours navigating various systems, sending emails, making phone calls, and researching multiple websites to find a truck, shippers can do it all in Kuebix Community Load Match!

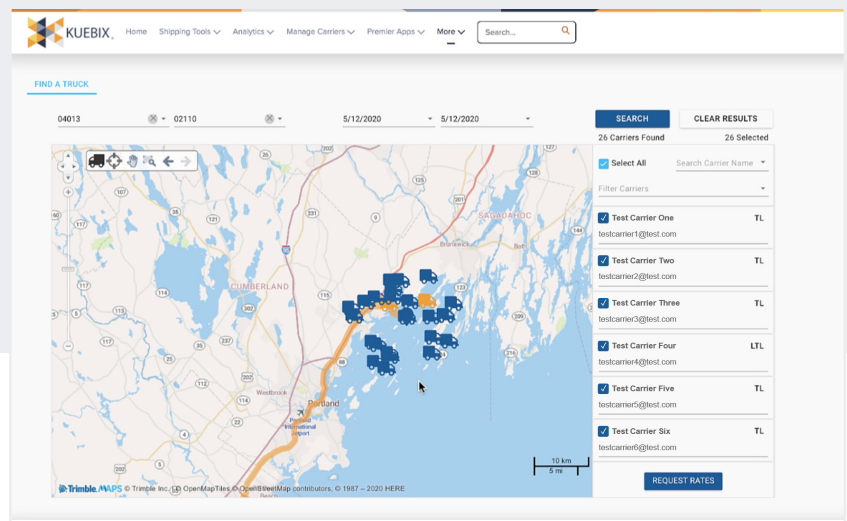
## START USING KUEBIX COMMUNITY LOAD MATCH TO:

- Connect with a rapidly growing carrier community from Trimble's network of 1.3 million commercial trucks, digital freight matching services, and brokers to meet your truckload needs on one platform
- Easily compare truckload rates from your carriers and the Kuebix carrier ecosystem to make sure you are getting the best rate possible
- Supplement existing capacity with reliable alternatives
- Receive rates, book carriers and manage shipments all through a single source
- Retain control by choosing the best provider for every truckload shipment



## HOW IT WORKS

- Log into Kuebix and navigate to Community Load Match or Get Spot Quotes
- Input shipping parameters and freight information
- View carriers with available capacity in the lane that was requested
- Select carriers to request spot rates
- Receive alerts as carriers submit rates
- View rates, book carriers, and manage shipments all within Kuebix



For more information, email us at [LoadMatch@Kuebix.com](mailto:LoadMatch@Kuebix.com).